

Certificate

Issued by: Semcon Sweden AB

Customer: Nordmount AB

Date: 2024-05-15

Reference: "10739192_Semcon_Nordmount_WindLoadAnalysis_SouthPanels_2024-04-26.pdf",
"10739192_Semcon_Nordmount_WindLoadAnalysis_EastWestPanels_2024-05-06.pdf"

Semcon Sweden AB have performed a simulation study using a virtual wind tunnel to determine the wind loads on roof-mounted solar panels. Both south-facing and east-west facing solar panel arrangements have been tested. The wind loads from the study can be used as input for further investigating the loading and dimensioning of mounting system structures. Detailed results of the simulation study can be found in the reports referenced above.

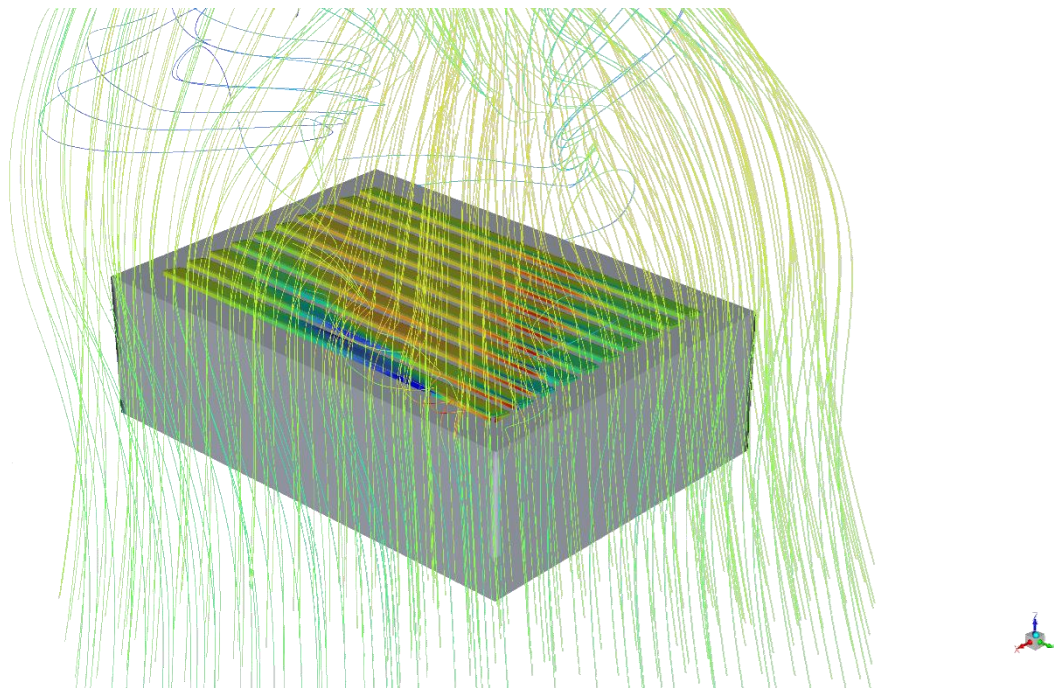


Figure 1: Velocity streamlines and wind-induced pressure field on south-facing solar panel system.

Standards used as simulation input:

EN 1991-1-4

Göteborg, 2024-05-15

