

## Flexi System

### Bain marie, 2 wells, 2GN , beechwood finish

ITEM # \_\_\_\_\_

MODEL # \_\_\_\_\_

NAME # \_\_\_\_\_

SIS # \_\_\_\_\_

AIA # \_\_\_\_\_


**321015 (FSL07C2D)**

 Bain marie, 2 wells, 2GN ,  
beechwood finish

### Short Form Specification

**Item No.** \_\_\_\_\_

304 AISI stainless steel worktop with rounded edges. Heated wells with rounded corners, thermostatically controlled temperature can be set between +60/+90°C, in 304 AISI stainless steel with drain hole and pipe. High speed heaters to reduce pre-heating time. Electronic overheating safety device. Wells are suited to accommodate GN 1/1 containers (max. H=200mm). Tempered glass overshelf with cold lights. Side panels in beech wood finishing. Ambient cupboard with doors in beech wood finishing on operator side. Tray slides in 304 AISI stainless steel, mounted on both sides of the unit, fold down in order to facilitate passage of the unit through doorways. The unit is mounted on 4 wheels (150mm high).

### Main Features

- Electronic overheating protection.
- Optional tilting plinth can be installed to cover the feet or the wheels.
- Wells in 304 AISI stainless steel with drain holes and pipes and with rounded corners to facilitate cleaning operations.
- Thermostatically controlled temperature can be set from +60 to +90°C, at ambient temperature, following HACCP rules.
- Tempered glass overshelf with cold lights included for an elegant and safe presentation of the food.
- The dimensions of the wells allow the storage of 1/1 GN containers (2 in the model 750 mm in length and 3 in the model 1125 mm in length) or various combinations of containers, all with a maximum height of 200 mm (available as accessories).
- Panels and hinged doors on the operator side, for quick, easy and hygienic storage, and have a beech wood finish.
- The two tray slides are constructed in plain 304 AISI stainless steel and can be folded down to facilitate passage of the units through doorways.

### Construction

- 304 AISI stainless steel top with rounded edges.
- Unit mounted on four wheels, 150 mm in height (two with brakes), but can be mounted on 150 mm high feet (as special).

### Optional Accessories

- OVER STRUCTURE WITH HOT LIGHT 750MM PNC 852026 ☐
- ELECTRICAL SOCKET FOR 2 PLUGS PNC 852031 ☐
- OVER HEAD POWER SUPPLY PNC 852032 ☐
- OVER HEAD POWER SUPPLY W/ ADJ.STAND PIPE PNC 852034 ☐
- TRAY SLIDE GABLE 1060X200 PNC 852042 ☐
- WATER FILLING AND OVERFLOW PNC 852053 ☐
- S/S COVER PLATE GN1/1 FOR BAINMARIE PNC 852054 ☐
- BREAD-BASKET OVER SHEL LED LIGHT 750MM PNC 852056 ☐
- DIVIDER FRAME KIT GN1/1 PNC 852061 ☐
- DIVIDER BAR GN1/2 PNC 852062 ☐
- ELEVATION GRILL 300X480X120MM PNC 852063 ☐
- ADJUSTABLE LEG, MARINE PNC 852064 ☐
- S/S TRAY SLIDER 750MM-WIDTH 200-270MM PNC 852068 ☐

**APPROVAL:** \_\_\_\_\_



**Electrolux**  
PROFESSIONAL

**Flexi System**  
**Bain marie, 2 wells, 2GN ,**  
**beechwood finish**

- S/S TRAY SLIDER 750MM-WIDTH 280-300MM PNC 852074 ☐
- REMOVABLE OVERSHELF S/S 750MM PNC 852113 ☐
- OTHER LAMINATE COLOURS FOR UNITS 750MM PNC 852133 ☐

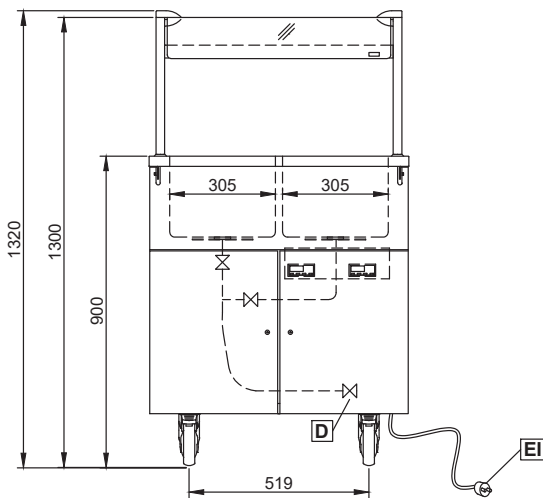


**Flexi System**  
**Bain marie, 2 wells, 2GN , beechwood finish**

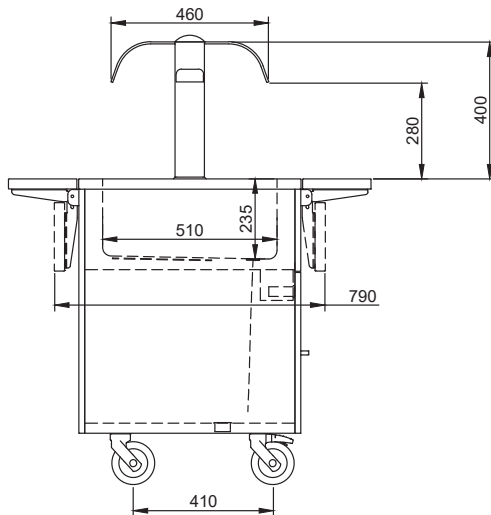
The company reserves the right to make modifications to the products without prior notice. All information correct at time of printing.

2024.10.18

Front

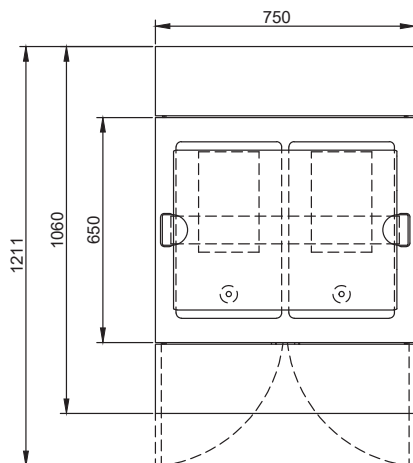


Side



D = Drain  
 EI = Electrical inlet (power)

Top



### Electric

Supply voltage:

321015 (FSL07C2D)

230 V/1 ph/50/60 Hz

Electrical power max.:

1 kW

### Water:

Drain line size:

1/2"

### Key Information:

External dimensions, Width: 750 mm

External dimensions, Depth: 1060 mm

External dimensions, Height: 1300 mm

Net weight: 60 kg

Bak lengte 305 mm

Well depth: 510 mm

Well height: 210 mm

Well/top temperature: 60°/90° C