

Flexi System U-shaped cashier unit, 3GN, beechwood finish

ITEM # _____

MODEL # _____

NAME # _____

SIS # _____

AIA # _____


321014 (FSLCU4)

 U-shaped Cashier Unit,
3GN, beechwood finish

Short Form Specification

Item No. _____

304 AISI stainless steel worktop with rounded edges designed for cash register placement. Drawer with lock and key supplied as standard. Side panels in beech wood finishing. Tray slides in 304 AISI stainless steel, mounted on both sides of the unit, fold down in order to facilitate passage of the unit through doorways. The unit is mounted on 4 wheels (150mm high).

Main Features

- Supplied as standard with a drawer with a lock and key.
- The cashier's unit is U-shaped and has panels with beech wood finish.
- The two tray slides are constructed in plain 304 AISI stainless steel and can be folded down to facilitate passage of the units through doorways.

Construction

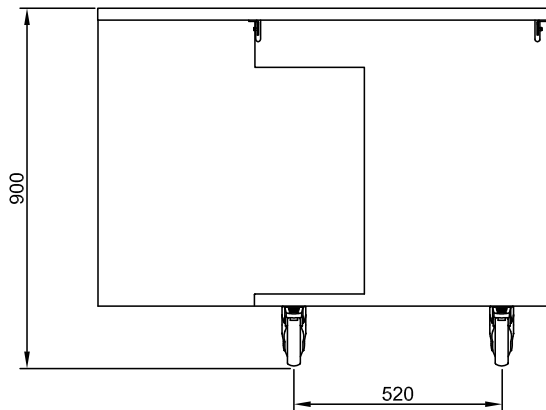
- Unit mounted on four wheels, 150 mm in height (two with brakes), but can be mounted on 150 mm high feet (as special).
- 304 AISI stainless steel top with rounded edges.

Optional Accessories

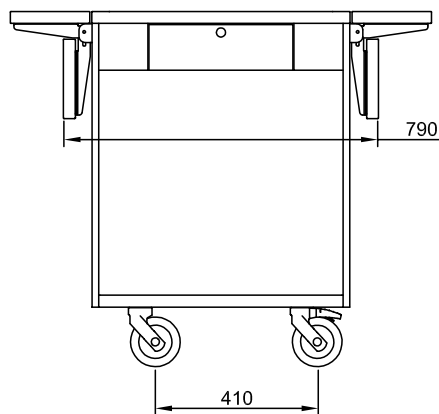
- ELECTRIZATION FOR NEUTRAL UNITS PNC 852029 ☐
- ELECTRICAL SOCKET FOR 2 PLUGS PNC 852031 ☐
- OVER HEAD POWER SUPPLY PNC 852032 ☐
- OVER HEAD POWER SUPPLY W/ ADJ.STAND PIPE PNC 852034 ☐
- TRAY SLIDE GABLE 1060X200 PNC 852042 ☐
- ADJUSTABLE LEG, MARINE PNC 852064 ☐
- S/S TRAY SLIDER 1125MM-WIDTH 200-270MM PNC 852069 ☐
- S/S TRAY SLIDER 1125MM-WIDTH 280-300MM PNC 852076 ☐
- OTHER LAMIN.COLOURS CASHIER UNIT 1125MM PNC 852137 ☐

APPROVAL: _____

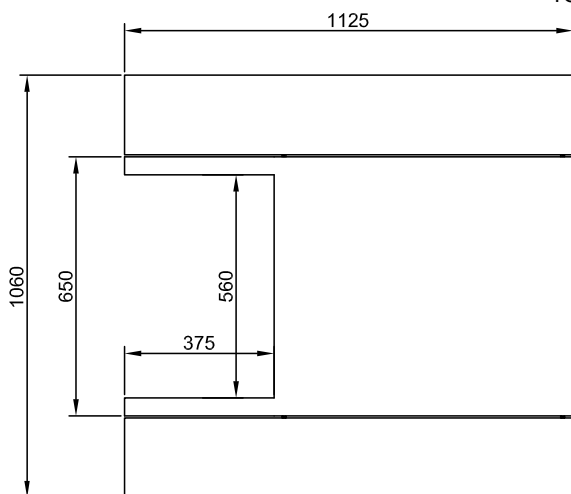
Front



Side



Top



Key Information:

External dimensions, Width:	
321014 (FSLCU4)	1125 mm
External dimensions, Depth:	1060 mm
External dimensions, Height:	900 mm
Net weight:	60 kg