

Modular Preparation 2000 mm Hot Cupboard with Sliding Doors

ITEM # _____

MODEL # _____

NAME # _____

SIS # _____

AIA # _____


121922 (TE2SE20)

 Hot Cupboard with 2 sliding
doors, 2000mm

Short Form Specification

Item No. _____

Constructed entirely in 304 AISI stainless steel. Front and rear longitudinal stainless steel c-channel reinforcement. Internal and external side panels with sound deadening reinforcements to strengthen structure. Sliding doors incorporate sound deadening internal panels. 150mm height-adjustable (0/+90mm) oversized feet (65x65mm) can be removed for masonry installation. 45° degree internal side corner junction system. 304 AISI middle shelf, with inner double fold to eliminate gaps between sides and back, height-adjustable in 3 positions with a stainless steel support to avoid twisting. Hot cupboard with channeled ventilation system (2-way output) to allow for a correct airflow and even temperature within the storage area. Fan-assisted heating via armoured elements assures temperature ranges from 30° to 90° C. Removable control panel with mechanical thermostat, green ON/OFF indicator light and orange indicator light for heating element operation.

Main Features

- Masonry installation possible by simply removing feet.
- Extremely easy to clean thanks to the smooth edges.

Construction

- Sound deadening reinforcements between internal and external side panels to strengthen structure.
- Mounted on 150 mm height adjustable (0/+90 mm) oversized (65x65 mm) feet.
- Internal sides supporting the structure to have 45° degrees internal side corners junction system.
- 30 mm high middle-shelf in AISI 304 stainless steel, height-adjustable in 3 positions, with inner double fold to eliminate gaps between sides and back.
- Supplied with a channeled ventilation system (2 way outputs) which allows a correct airflow and even temperature inside the storage area.
- Fan assisted heating via armored elements ensuring temperature range from 30° to 90°C.
- Detachable control panel with mechanical thermostat and on/off green and orange indicator light for heating element operation.
- Front and rear lengthwise stainless steel c-channel reinforcement, 15/10 (16 gauges).
- Constructed entirely in AISI 304 Stainless Steel with Scotch Brite finish.
- Sliding doors, with sound deadening internal and external panels, run on the upper part on the s/s bearings and on the lower part on a hidden runner. Doors are easy to remove thus facilitating cleaning procedures.

APPROVAL: _____



Electrolux
PROFESSIONAL

Modular Preparation 2000 mm Hot Cupboard with Sliding Doors

Electric

Supply voltage:

121922 (TE2SE20)

230 V/1 ph/50/60 Hz

Total Watts:

2 kW

Key Information:

Cabinet width: 1830 mm

Cabinet depth: 620 mm

Cabinet height: 645 mm

N° of doors: 2

Door Type: Sliding

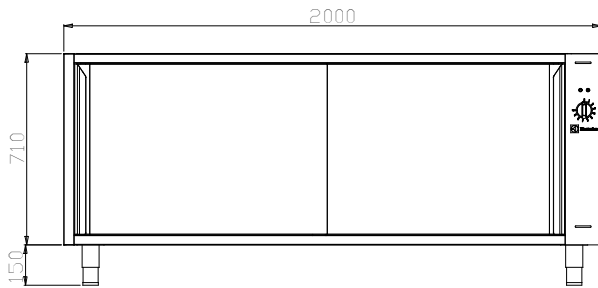
External dimensions, Width: 2000 mm

External dimensions, Depth: 680 mm

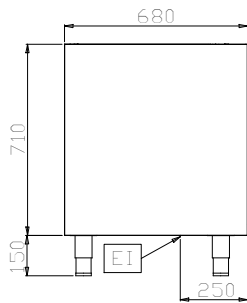
External dimensions, Height: 860 mm

Net weight: 121 kg

Front

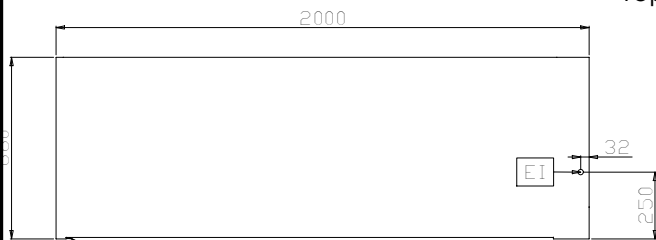


Side



EI = Electrical inlet (power)

Top



Modular Preparation
2000 mm Hot Cupboard with Sliding Doors

The company reserves the right to make modifications to the products without prior notice. All information correct at time of printing.

2024.10.17