

## Modular Preparation 1200 mm Hot Cupboard with Sliding Doors

ITEM # \_\_\_\_\_

MODEL # \_\_\_\_\_

NAME # \_\_\_\_\_

SIS # \_\_\_\_\_

AIA # \_\_\_\_\_



121906 (TE2SE12)

Hot Cupboard with 2 sliding  
doors, 1200mm

### Short Form Specification

#### Item No. \_\_\_\_\_

Constructed entirely in 304 AISI stainless steel. Front and rear longitudinal stainless steel c-channel reinforcement. Internal and external side panels with sound deadening reinforcements to strengthen structure. Sliding doors incorporate sound deadening internal panels. 150mm height-adjustable (0/+90mm) oversized feet (65x65mm) can be removed for masonry installation. 45° degree internal side corner junction system. 304 AISI middle shelf, with inner double fold to eliminate gaps between sides and back, height-adjustable in 3 positions with a stainless steel support to avoid twisting. Hot cupboard with channeled ventilation system (2-way output) to allow for a correct airflow and even temperature within the storage area. Fan-assisted heating via armoured elements assures temperature ranges from 30° to 90° C. Removable control panel with mechanical thermostat, green ON/OFF indicator light and orange indicator light for heating element operation.

### Main Features

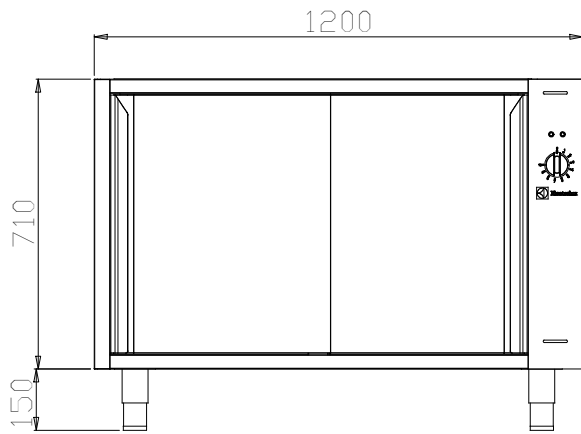
- Masonry installation possible by simply removing feet.
- Extremely easy to clean thanks to the smooth edges.

### Construction

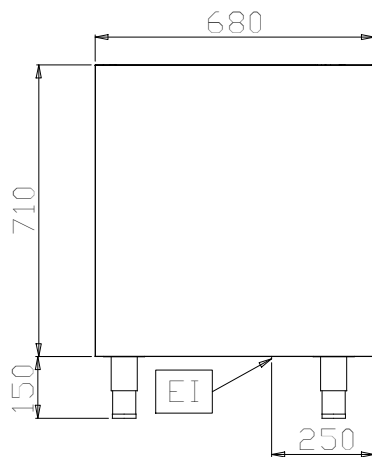
- Sound deadening reinforcements between internal and external side panels to strengthen structure.
- Mounted on 150 mm height adjustable (0/+90 mm) oversized (65x65 mm) feet.
- Internal sides supporting the structure to have 45° degrees internal side corners junction system.
- 30 mm high middle-shelf in AISI 304 stainless steel, height-adjustable in 3 positions, with inner double fold to eliminate gaps between sides and back.
- Supplied with a channeled ventilation system (2 way outputs) which allows a correct airflow and even temperature inside the storage area.
- Fan assisted heating via armoured elements ensuring temperature range from 30° to 90°C.
- Detachable control panel with mechanical thermostat and on/off green and orange indicator light for heating element operation.
- Front and rear lengthwise stainless steel c-channel reinforcement, 15/10 (16 gauges).
- Constructed entirely in AISI 304 Stainless Steel with Scotch Brite finish.
- Sliding doors, with sound deadening internal and external panels, run on the upper part on the s/s bearings and on the lower part on a hidden runner. Doors are easy to remove thus facilitating cleaning procedures.

APPROVAL: \_\_\_\_\_

Front

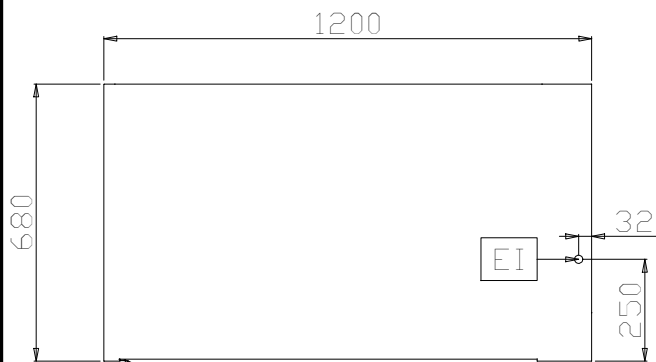


Side



EI = Electrical inlet (power)

Top



## Electric

Supply voltage:

121906 (TE2SE12)

230 V/1 ph/50/60 Hz

Total Watts:

1.6 kW

## Key Information:

Cabinet width:	1030 mm
Cabinet depth:	620 mm
Cabinet height:	645 mm
N° of doors:	2
Door Type:	Sliding
External dimensions, Width:	1200 mm
External dimensions, Depth:	680 mm
External dimensions, Height:	860 mm
Net weight:	83 kg